



236 WEST 10TH STREET

BETWEEN HUDSON AND BLEECKER STREETS | WEST VILLAGE



AS EXCLUSIVE AGENTS WE ARE PLEASED TO OFFER THE FOLLOWING RETAIL OPPORTUNITY FOR DIRECT LEASE:

APPROXIMATE SIZE

Ground Floor: 740 Square Feet

FRONTAGE

22 Feet

ASKING RENT

\$12,500 Per Month

POSSESSION

October 1, 2017

TERM

10 Years

NEIGHBORS

The Quarter, Employees Only, Starbucks, L'Artusi, Village Apothecary, Sarah Pacini Bleecker, 7 For All Mankind

COMMENTS

- Delivered New White Box

TRANSPORTATION



JAMES FAMULARO

Senior Director
jfamularo@easternconsolidated.com
646.658.7373

JEFF GEOGHEGAN

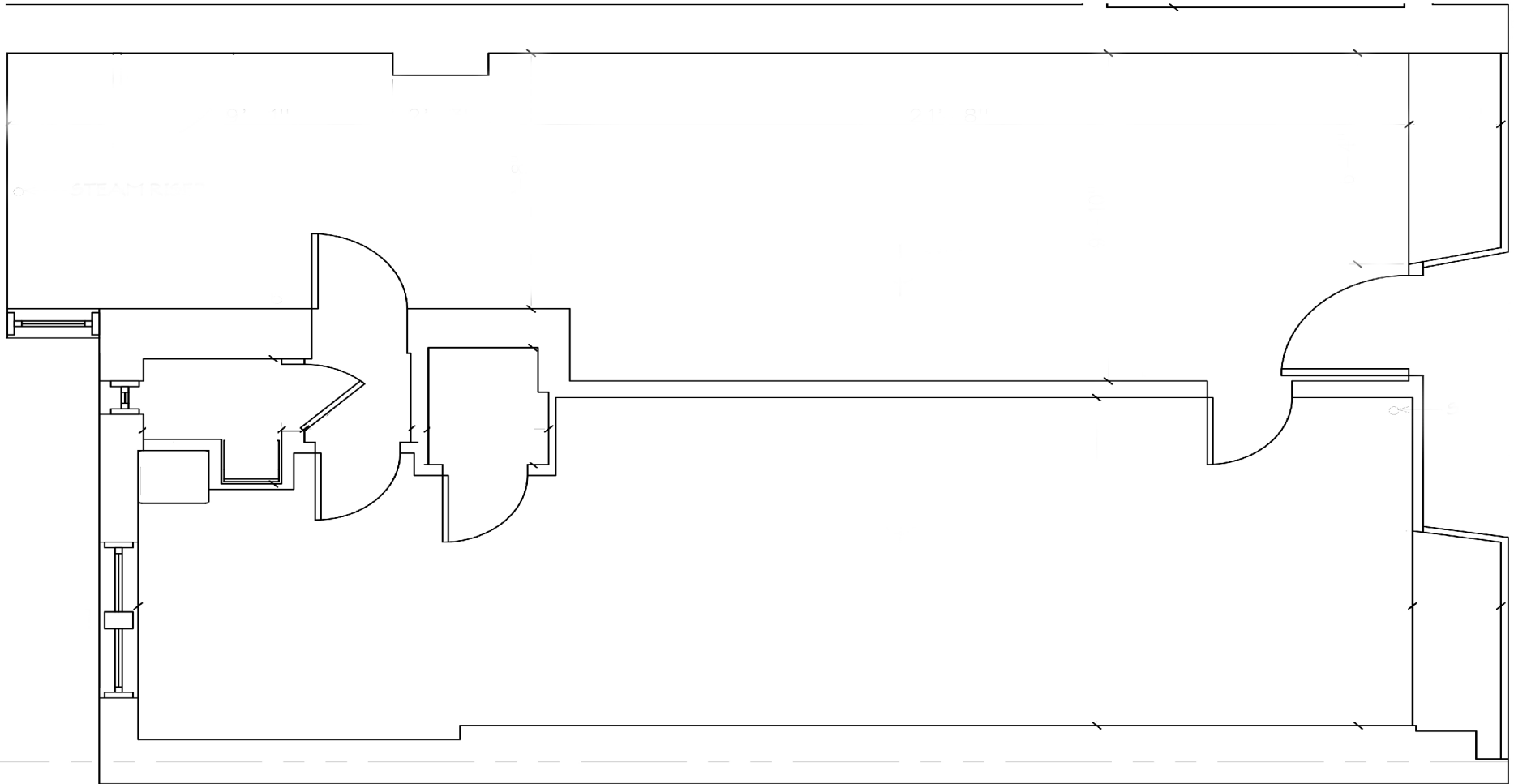
Director
jgeoghegan@easternconsolidated.com
646.658.7371





236 WEST 10TH STREET

BETWEEN HUDSON AND BLEECKER STREETS | WEST VILLAGE



JAMES FAMULARO

Senior Director
jfamularo@easternconsolidated.com
646.658.7373

JEFF GEOGHEGAN

Director
jgeoghegan@easternconsolidated.com
646.658.7371



All information supplied is from sources deemed reliable and is furnished subject to errors, omissions, modifications, removal of the listing from sale or lease, and to any listing conditions, including the rates and manner of payment of commissions for particular offerings imposed by Eastern Consolidated. This information may include estimates and projections prepared by Eastern Consolidated with respect to future events, and these future events may or may not actually occur. Such estimates and projections reflect various assumptions concerning anticipated results. While Eastern Consolidated believes these assumptions are reasonable, there can be no assurance that any of these estimates and projections will be correct. Therefore, actual results may vary materially from these estimates and projections. Any square footage dimensions set forth are approximate.



236 WEST 10TH STREET

BETWEEN HUDSON AND BLEECKER STREETS | WEST VILLAGE



JAMES FAMULARO

Senior Director
jfamularo@easternconsolidated.com
646.658.7373

JEFF GEOGHEGAN

Director
jgeoghegan@easternconsolidated.com
646.658.7371



All information supplied is from sources deemed reliable and is furnished subject to errors, omissions, modifications, removal of the listing from sale or lease, and to any listing conditions, including the rates and manner of payment of commissions for particular offerings imposed by Eastern Consolidated. This information may include estimates and projections prepared by Eastern Consolidated with respect to future events, and these future events may or may not actually occur. Such estimates and projections reflect various assumptions concerning anticipated results. While Eastern Consolidated believes these assumptions are reasonable, there can be no assurance that any of these estimates and projections will be correct. Therefore, actual results may vary materially from these estimates and projections. Any square footage dimensions set forth are approximate.